

SENP5 Antibody



PACO01481

Product Information

Size:

50ug

Reactivity:

Human, Mouse, Monkey

Source:

Rabbit

Isotype:

IgG

Applications:

ELISA, WB, IHC

Recommended dilutions:

WB:1:500-1:2000, IHC:1:100-1:300

Protein Background:**Gene ID:**

SENP5

Uniprot

Q96HI0

Synonyms:

SENP5; FKSG45; Sentrin-specific protease 5; Sentrin/SUMO-specific protease SENP5

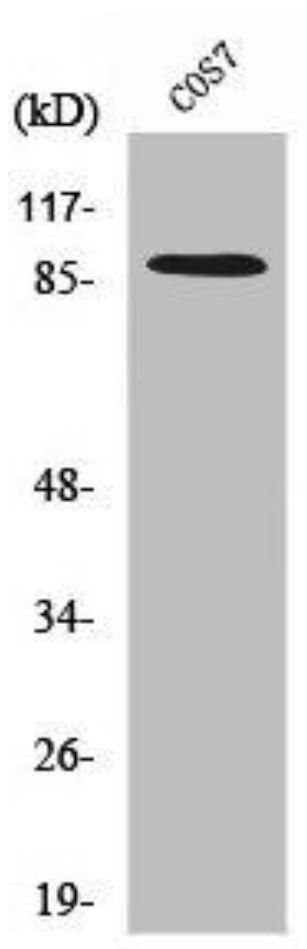
Immunogen:

Synthesized peptide derived from the C-terminal region of human SENP5.

Storage:

Liquid in PBS containing 50% glycerol, 0.5% BSA and 0.02% sodium azide.

Product Images



Western Blot analysis of COS7 cells using SENP5 Polyclonal Antibody.