

SEPT7 Antibody



PACO01486

Product Information

Size:

50ug

Reactivity:

Human, Mouse, Rat

Source:

Rabbit

Isotype:

IgG

Applications:

ELISA, WB, IHC

Recommended dilutions:

WB:1:500-1:2000, IHC:1:100-1:300,
IHC:1:200-1:1000

Protein Background:**Gene ID:**

39326

Uniprot

Q16181

Synonyms:

SEPT7; CDC10; Septin-7; CDC10 protein homolog

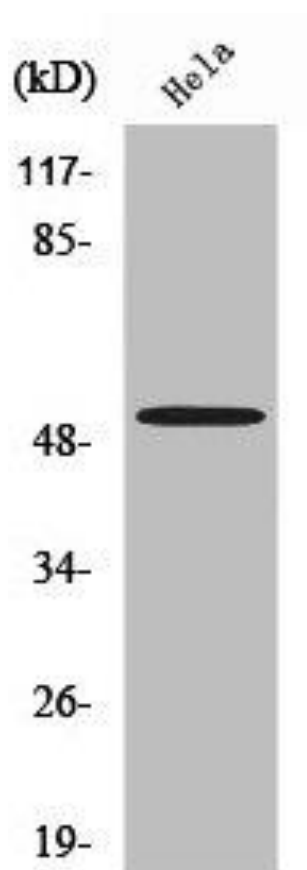
Immunogen:

Synthesized peptide derived from the C-terminal region of human Septin 7.

Storage:

Liquid in PBS containing 50% glycerol, 0.5% BSA and 0.02% sodium azide.

Product Images



Western Blot analysis of MCF7 cells using Septin 7 Polyclonal Antibody.