

SGK1 Antibody



PACO01491

Product Information

Size:

50ug

Reactivity:

Human, Mouse, Rat

Source:

Rabbit

Isotype:

IgG

Applications:

ELISA, WB, IHC

Recommended dilutions:

WB:1:500-1:2000, IHC:1:100-1:300

Protein Background:

Gene ID:

SGK1

Uniprot

O00141

Synonyms:

SGK1; SGK; Serine/threonine-protein kinase Sgk1; Serum/glucocorticoid-regulated kinase 1

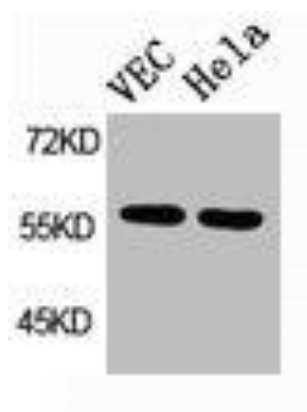
Immunogen:

Synthesized peptide derived from human SGK1 around the non-phosphorylation site of S422.

Storage:

Liquid in PBS containing 50% glycerol, 0.5% BSA and 0.02% sodium azide.

Product Images



Western Blot analysis of HuvEc HELA cells using SGK1 Polyclonal Antibody.