

SH2D5 Antibody



PACO01494

Product Information

Size:

50ug

Reactivity:

Human, Mouse, Rat

Source:

Rabbit

Isotype:

IgG

Applications:

ELISA, WB

Recommended dilutions:

WB:1:500-1:2000

Protein Background:

Gene ID:

SH2D5

Uniprot

Q6ZV89

Synonyms:

SH2D5; SH2 domain-containing protein 5

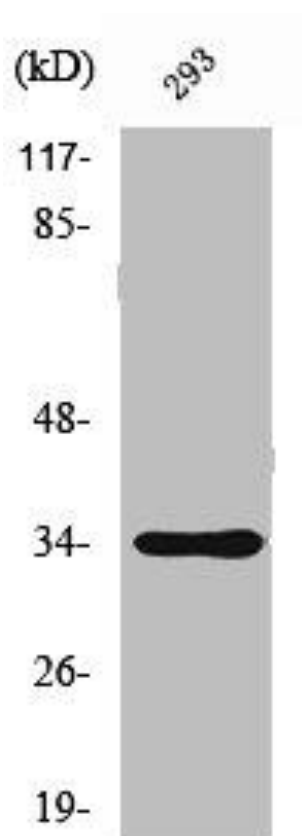
Immunogen:

Synthesized peptide derived from the C-terminal region of human SH2D5.

Storage:

Liquid in PBS containing 50% glycerol, 0.5% BSA and 0.02% sodium azide.

Product Images



Western Blot analysis of 293 cells using SH2D5 Polyclonal Antibody.