

# SFXN4 Antibody



PACO01499

---

## Product Information

**Size:**

50ug

**Reactivity:**

Human

**Source:**

Rabbit

**Isotype:**

IgG

**Applications:**

ELISA, WB, IF

**Recommended dilutions:**

WB:1:500-1:2000, IF:1:200-1:1000

**Protein Background:**

**Gene ID:**

SFXN4

**Uniprot**

Q6P4A7

**Synonyms:**

SFXN4; BCRM1; Sideroflexin-4; Breast cancer resistance marker 1

**Immunogen:**

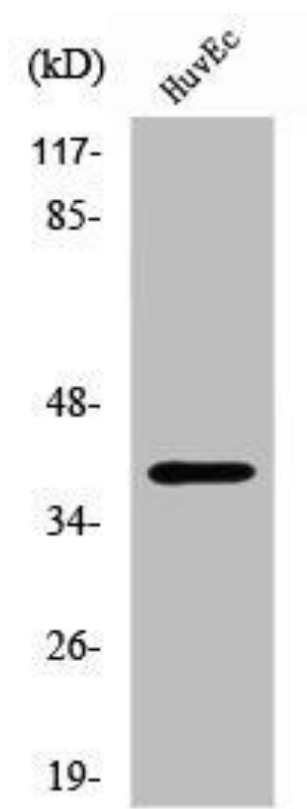
Synthesized peptide derived from the N-terminal region of human Sideroflexin-4.

**Storage:**

Liquid in PBS containing 50% glycerol, 0.5% BSA and 0.02% sodium azide.

## Product Images

---



Western Blot analysis of HuvEc cells using Sideroflexin-4 Polyclonal Antibody.