

SMAD2/SMAD3 Antibody



PACO01514

Product Information

Size:

50ug

Reactivity:

Human, Mouse, Rat, Monkey

Source:

Rabbit

Isotype:

IgG

Applications:

ELISA, WB, IHC

Recommended dilutions:

WB:1:500-1:2000, IHC:1:100-1:300

Protein Background:**Gene ID:**

SMAD2/SMAD3

Uniprot

Q15796/P84022

Synonyms:

SMAD2; MADH2; MADR2; Mothers against decapentaplegic homolog 2; MAD homolog 2; Mothers against DPP homolog 2; JV18-1; Mad-related protein 2; hMAD-2; SMAD family member 2; SMAD 2; Smad2; hSMAD2; SMAD3; MADH3; Mothers against decapentaplegic

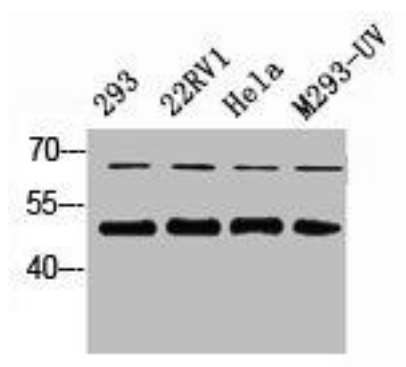
Immunogen:

Synthesized peptide derived from human Smad2/3 around the non-phosphorylation site of T8.

Storage:

Liquid in PBS containing 50% glycerol, 0.5% BSA and 0.02% sodium azide.

Product Images



Western Blot analysis of 823 22RV1 HELA 293-UV cells using Smad2/3 Polyclonal Antibody.