

SNX1 Antibody



PACO01522

Product Information

Size:

50ug

Reactivity:

Human, Mouse, Rat

Source:

Rabbit

Isotype:

IgG

Applications:

ELISA, WB

Recommended dilutions:

WB:1:500-1:2000

Protein Background:

Gene ID:

SNX1

Uniprot

Q13596

Synonyms:

SNX1; Sorting nexin-1

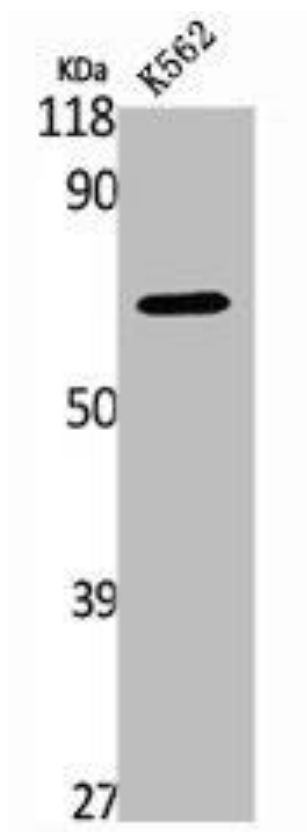
Immunogen:

Synthesized peptide derived from the Internal region of human SNX1.

Storage:

Liquid in PBS containing 50% glycerol, 0.5% BSA and 0.02% sodium azide.

Product Images



Western Blot analysis of K562 cells using SNX1 Polyclonal Antibody.