

# SRF Antibody



PACO01541

---

## Product Information

**Size:**

50ug

**Reactivity:**

Human, Mouse, Rat

**Source:**

Rabbit

**Isotype:**

IgG

**Applications:**

ELISA, WB, IHC

**Recommended dilutions:**

WB:1:500-1:2000, IHC:1:100-1:300

**Protein Background:****Gene ID:**

SRF

**Uniprot**

P11831

**Synonyms:**

SRF; Serum response factor; SRF

**Immunogen:**

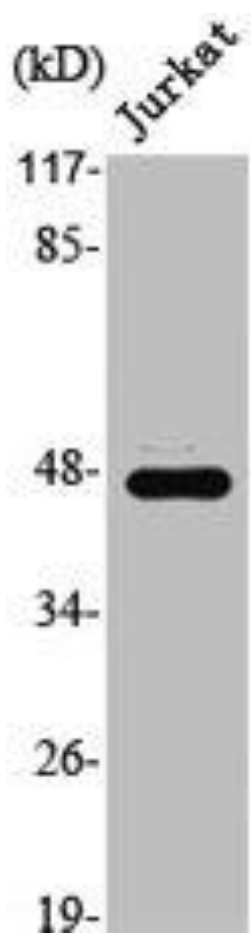
Synthesized peptide derived from human SRF around the non-phosphorylation site of S103.

**Storage:**

Liquid in PBS containing 50% glycerol, 0.5% BSA and 0.02% sodium azide.

## Product Images

---



Western Blot analysis of Jurkat cells using SRF Polyclonal Antibody.