

SYN1 Antibody



PACO01561

Product Information

Size:

50ug

Reactivity:

Human, Mouse, Rat

Source:

Rabbit

Isotype:

IgG

Applications:

ELISA, WB, IHC, IF

Recommended dilutions:

WB:1:500-1:2000, IHC:1:100-1:300,
IF:1:200-1:1000

Protein Background:

Gene ID:

SYN1

Uniprot

P17600

Synonyms:

SYN1; Synapsin-1; Brain protein 4.1; Synapsin I

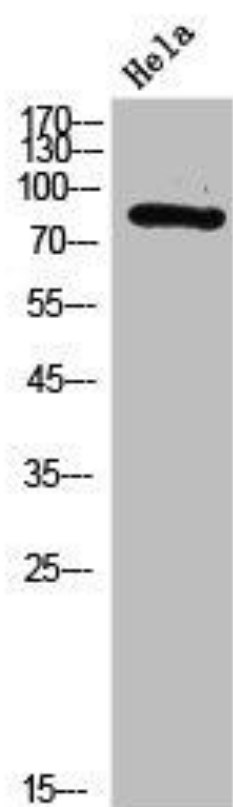
Immunogen:

Synthesized peptide derived from human Synapsin I around the non-phosphorylation site of S9.

Storage:

Liquid in PBS containing 50% glycerol, 0.5% BSA and 0.02% sodium azide.

Product Images



Western Blot analysis of HELA cells using Synapsin I Polyclonal Antibody.