

# SNCAIP Antibody



PACO01566

---

## Product Information

**Size:**

50ug

**Reactivity:**

Human, Mouse

**Source:**

Rabbit

**Isotype:**

IgG

**Applications:**

ELISA, WB, IHC

**Recommended dilutions:**

WB:1:500-1:2000, IHC:1:100-1:300

**Protein Background:****Gene ID:**

SNCAIP

**Uniprot**

Q9Y6H5

**Synonyms:**

SNCAIP; Synphilin-1; Sph1; Alpha-synuclein-interacting protein

**Immunogen:**

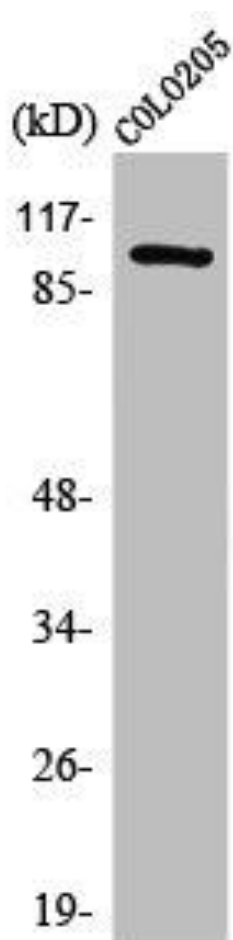
Synthesized peptide derived from the C-terminal region of human Synphilin-1.

**Storage:**

Liquid in PBS containing 50% glycerol, 0.5% BSA and 0.02% sodium azide.

## Product Images

---



Western Blot analysis of COLO205 cells using Synphilin-1 Polyclonal Antibody.