

# STX1A Antibody



PACO01567

---

## Product Information

**Size:**

50ug

**Reactivity:**

Human, Mouse, Rat, Monkey

**Source:**

Rabbit

**Isotype:**

IgG

**Applications:**

ELISA, WB, IHC, IF

**Recommended dilutions:**

WB:1:500-1:2000, IHC:1:100-1:300,  
IF:1:200-1:1000

**Protein Background:****Gene ID:**

STX1A

**Uniprot**

Q16623

**Synonyms:**

STX1A; STX1; Syntaxin-1A; Neuron-specific antigen HPC-1

**Immunogen:**

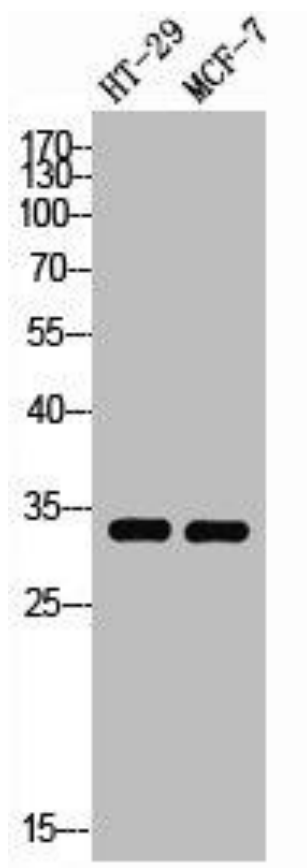
Synthesized peptide derived from human Syntaxin 1 around the non-phosphorylation site of S14.

**Storage:**

Liquid in PBS containing 50% glycerol, 0.5% BSA and 0.02% sodium azide.

## Product Images

---



Western Blot analysis of HT29 MCF7 cells using Syntaxin 1 Polyclonal Antibody.