

SERINC2 Antibody



PACO01602

Product Information

Size:

50ug

Reactivity:

Human, Mouse, Rat

Source:

Rabbit

Isotype:

IgG

Applications:

ELISA, WB, IHC, IF

Recommended dilutions:

WB:1:500-1:2000, IHC:1:100-1:300,
IF:1:200-1:1000

Protein Background:

Gene ID:

SERINC2

Uniprot

Q96SA4

Synonyms:

SERINC2; TDE2L; FKSG84; Serine incorporator 2; Tumor differentially expressed protein 2-like

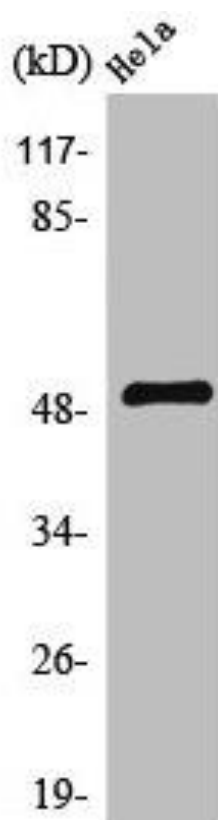
Immunogen:

Synthesized peptide derived from the C-terminal region of human TDE2L.

Storage:

Liquid in PBS containing 50% glycerol, 0.5% BSA and 0.02% sodium azide.

Product Images



Western Blot analysis of HeLa cells using TDE2L Polyclonal Antibody.