

TGFB3 Antibody



PACO01619

Product Information

Size:

50ug

Reactivity:

Human, Mouse, Rat, Monkey

Source:

Rabbit

Isotype:

IgG

Applications:

ELISA, WB, IHC

Recommended dilutions:

WB:1:500-1:2000, IHC:1:100-1:300

Protein Background:**Gene ID:**

TGFB3

Uniprot

P10600

Synonyms:

TGFB3; Transforming growth factor beta-3; TGF-beta-3

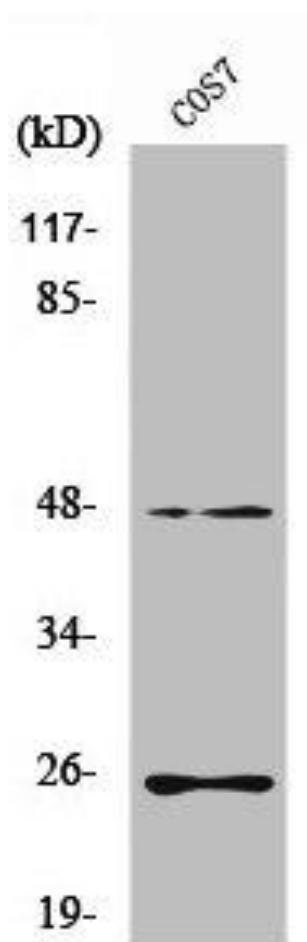
Immunogen:

Synthesized peptide derived from the Internal region of human TGFBeta3.

Storage:

Liquid in PBS containing 50% glycerol, 0.5% BSA and 0.02% sodium azide.

Product Images



Western Blot analysis of COS7 cells using TGFbeta3 Polyclonal Antibody.