

USP38 Antibody



PACO01682

Product Information

Size:

50ug

Reactivity:

Human

Source:

Rabbit

Isotype:

IgG

Applications:

ELISA, WB

Recommended dilutions:

WB:1:500-1:2000

Protein Background:**Gene ID:**

USP38

Uniprot

Q8NB14

Synonyms:

USP38; KIAA1891; Ubiquitin carboxyl-terminal hydrolase 38; Deubiquitinating enzyme 38; HP43.8KD; Ubiquitin thioesterase 38; Ubiquitin-specific-processing protease 38

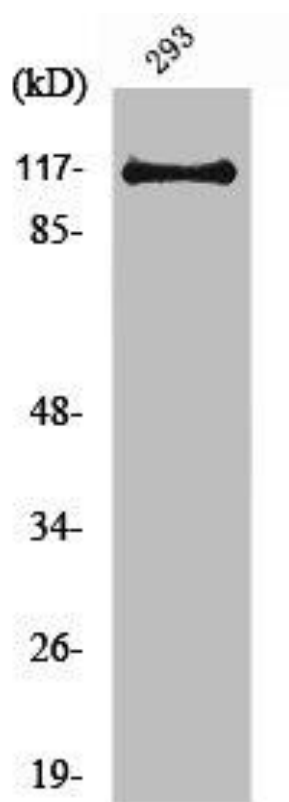
Immunogen:

Synthesized peptide derived from the Internal region of human USP38.

Storage:

Liquid in PBS containing 50% glycerol, 0.5% BSA and 0.02% sodium azide.

Product Images



Western Blot analysis of 293 cells using USP38 Polyclonal Antibody.