

VASH1 Antibody



PACO01688

Product Information

Size:

50ug

Reactivity:

Human, Mouse, Rat

Source:

Rabbit

Isotype:

IgG

Applications:

ELISA, WB

Recommended dilutions:

WB:1:500-1:2000

Protein Background:

Gene ID:

VASH1

Uniprot

Q7L8A9

Synonyms:

VASH1; KIAA1036; VASH; Vasohibin-1

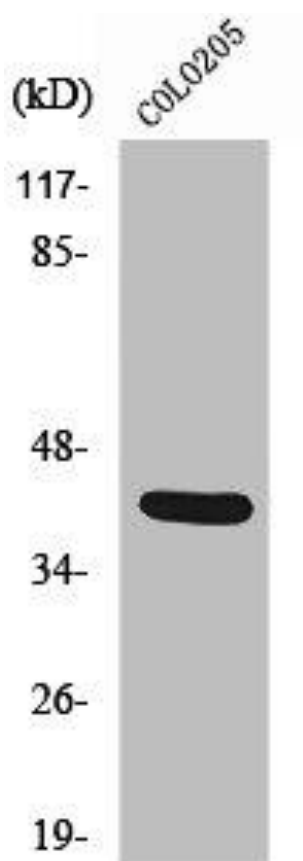
Immunogen:

Synthesized peptide derived from the Internal region of human Vasohibin.

Storage:

Liquid in PBS containing 50% glycerol, 0.5% BSA and 0.02% sodium azide.

Product Images



Western Blot analysis of COLO205 cells using Vasohibin Polyclonal Antibody.