

# GTF2IRD1 Antibody



PACO01700

---

## Product Information

**Size:**

50ug

**Reactivity:**

Human, Mouse, Rat

**Source:**

Rabbit

**Isotype:**

IgG

**Applications:**

ELISA, WB, IHC

**Recommended dilutions:**

WB:1:500-1:2000, IHC:1:100-1:300

**Protein Background:****Gene ID:**

GTF2IRD1

**Uniprot**

Q9UHL9

**Synonyms:**

GTF2IRD1; CREAM1; GTF3; MUSTRD1; RBAP2; WBSCR11; WBSCR12; General transcription factor II-I repeat domain-containing protein 1; GTF2I repeat domain-containing protein 1; General transcription factor III; MusTRD1/BEN; Muscle TFII-I repeat do

**Immunogen:**

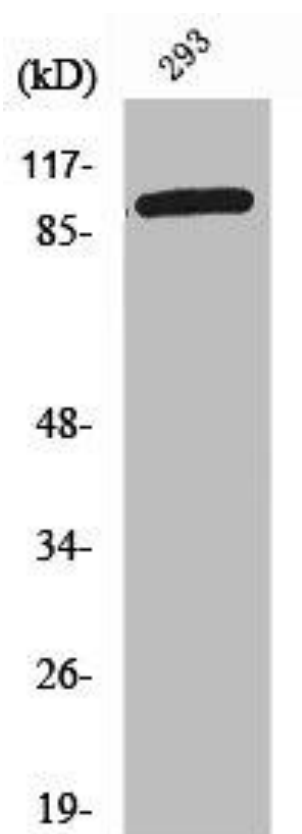
Synthesized peptide derived from the N-terminal region of human WBSCR11.

**Storage:**

Liquid in PBS containing 50% glycerol, 0.5% BSA and 0.02% sodium azide.

## Product Images

---



Western Blot analysis of 293 cells using WBSR11 Polyclonal Antibody.