

XRCC2 Antibody



PACO01709

Product Information

Size:

50ug

Reactivity:

Human

Source:

Rabbit

Isotype:

IgG

Applications:

ELISA, WB, IHC

Recommended dilutions:

WB:1:500-1:2000, IHC:1:100-1:300

Protein Background:**Gene ID:**

XRCC2

Uniprot

O43543

Synonyms:

XRCC2; DNA repair protein XRCC2; X-ray repair cross-complementing protein 2

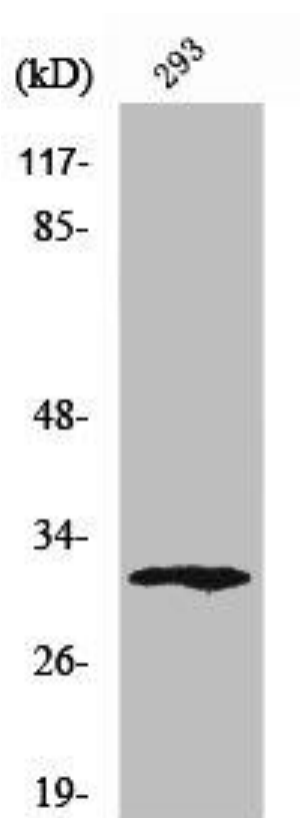
Immunogen:

Synthesized peptide derived from the C-terminal region of human XRCC2.

Storage:

Liquid in PBS containing 50% glycerol, 0.5% BSA and 0.02% sodium azide.

Product Images



Western Blot analysis of 293 cells using XRCC2 Polyclonal Antibody.