

# ZBTB40 Antibody



PACO01717

---

## Product Information

**Size:**

50ug

**Reactivity:**

Human, Mouse

**Source:**

Rabbit

**Isotype:**

IgG

**Applications:**

ELISA, WB, IHC

**Recommended dilutions:**

WB:1:500-1:2000, IHC:1:100-1:300

**Protein Background:****Gene ID:**

ZBTB40

**Uniprot**

Q9NUA8

**Synonyms:**

ZBTB40; KIAA0478; Zinc finger and BTB domain-containing protein 40

**Immunogen:**

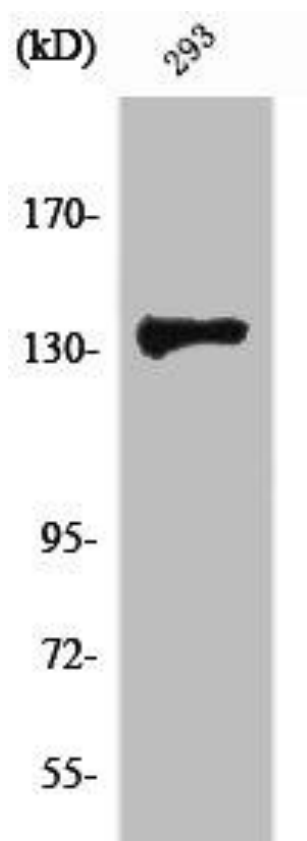
Synthesized peptide derived from the C-terminal region of human ZBTB40.

**Storage:**

Liquid in PBS containing 50% glycerol, 0.5% BSA and 0.02% sodium azide.

## Product Images

---



Western Blot analysis of 293 cells using ZBTB40 Polyclonal Antibody.