

ZNF225 Antibody



PACO01725

Product Information

Size:

50ug

Reactivity:

Human

Source:

Rabbit

Isotype:

IgG

Applications:

ELISA, WB, IHC

Recommended dilutions:

WB:1:500-1:2000, IHC:1:100-1:300

Protein Background:

Gene ID:

ZNF225

Uniprot

Q9UK10

Synonyms:

ZNF225; Zinc finger protein 225

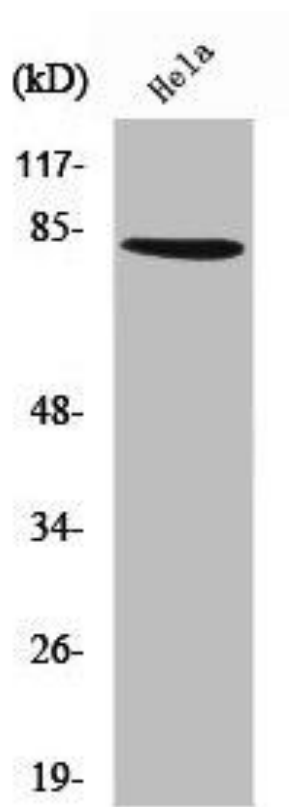
Immunogen:

Synthesized peptide derived from the C-terminal region of human ZNF225.

Storage:

Liquid in PBS containing 50% glycerol, 0.5% BSA and 0.02% sodium azide.

Product Images



Western Blot analysis of HeLa cells using ZNF225 Polyclonal Antibody.