

ZNF329 Antibody



PACO01726

Product Information

Size:

50ug

Reactivity:

Human

Source:

Rabbit

Isotype:

IgG

Applications:

ELISA, WB, IHC

Recommended dilutions:

WB:1:500-1:2000, IHC:1:100-1:300

Protein Background:

Gene ID:

ZNF329

Uniprot

Q86UD4

Synonyms:

ZNF329; Zinc finger protein 329

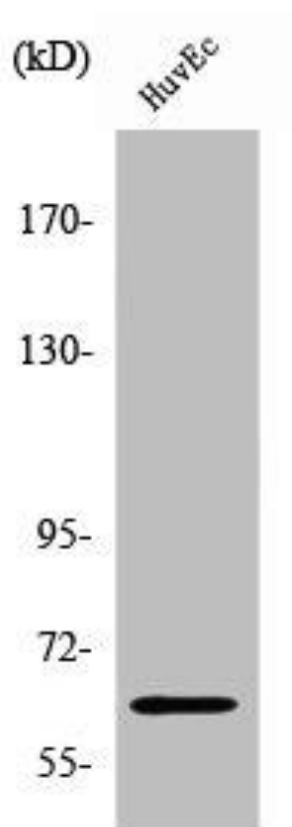
Immunogen:

Synthesized peptide derived from the Internal region of human ZNF329.

Storage:

Liquid in PBS containing 50% glycerol, 0.5% BSA and 0.02% sodium azide.

Product Images



Western Blot analysis of HuvEc cells using ZNF329 Polyclonal Antibody.