

ZNF337 Antibody



PACO01727

Product Information

Size:

50ug

Reactivity:

Human

Source:

Rabbit

Isotype:

IgG

Applications:

ELISA, WB, IHC, IF

Recommended dilutions:

WB:1:500-1:2000, IHC:1:100-1:300,
IF:1:200-1:1000

Protein Background:**Gene ID:**

ZNF337

Uniprot

Q9Y3M9

Synonyms:

ZNF337; Zinc finger protein 337

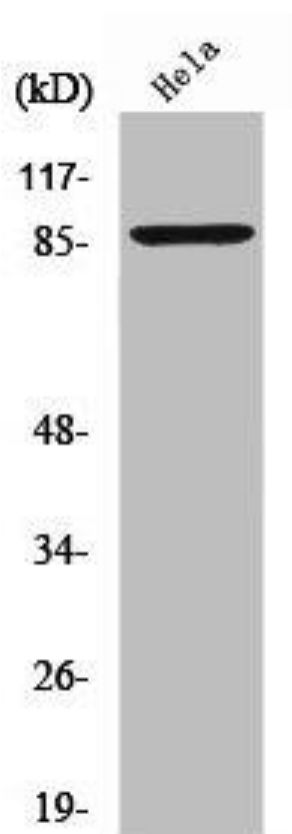
Immunogen:

Synthesized peptide derived from the Internal region of human ZNF337.

Storage:

Liquid in PBS containing 50% glycerol, 0.5% BSA and 0.02% sodium azide.

Product Images



Western Blot analysis of HeLa cells using ZNF337 Polyclonal Antibody.