

# ZNF397 Antibody



PACO01728

---

## Product Information

**Size:**

50ug

**Reactivity:**

Human

**Source:**

Rabbit

**Isotype:**

IgG

**Applications:**

ELISA, WB, IHC, IF

**Recommended dilutions:**

WB:1:500-1:2000, IHC:1:100-1:300,  
IF:1:200-1:1000

**Protein Background:****Gene ID:**

ZNF397

**Uniprot**

Q8NF99

**Synonyms:**

ZNF397; ZNF47; ZSCAN15; Zinc finger protein 397; Zinc finger and SCAN domain-containing protein 15; Zinc finger protein 47

**Immunogen:**

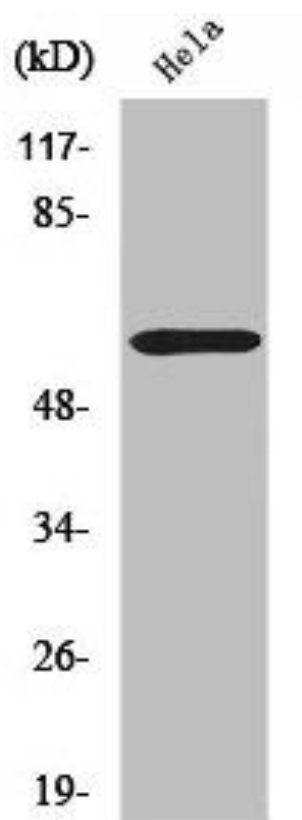
Synthesized peptide derived from the N-terminal region of human ZNF397.

**Storage:**

Liquid in PBS containing 50% glycerol, 0.5% BSA and 0.02% sodium azide.

## Product Images

---



Western Blot analysis of HuvEc cells using ZNF397 Polyclonal Antibody.