

# ZSCAN25 Antibody



PACO01730

---

## Product Information

**Size:**

50ug

**Reactivity:**

Human, Monkey

**Source:**

Rabbit

**Isotype:**

IgG

**Applications:**

ELISA, WB

**Recommended dilutions:**

WB:1:500-1:2000

**Protein Background:**

**Gene ID:**

ZSCAN25

**Uniprot**

Q6NSZ9

**Synonyms:**

ZNF498; ZSCAN25; Zinc finger protein 498; Zinc finger and SCAN domain-containing protein 25

**Immunogen:**

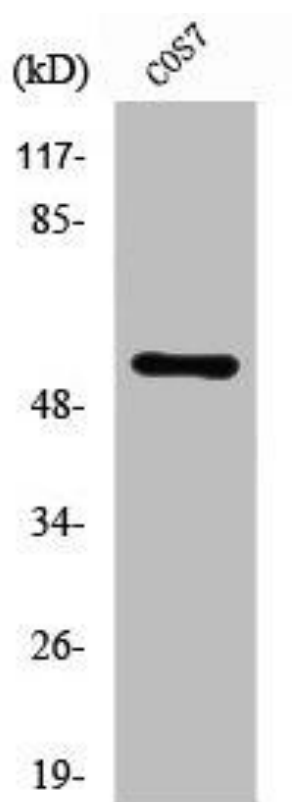
Synthesized peptide derived from the C-terminal region of human ZNF498.

**Storage:**

Liquid in PBS containing 50% glycerol, 0.5% BSA and 0.02% sodium azide.

## Product Images

---



Western Blot analysis of COS7 cells using ZNF498 Polyclonal Antibody.