

ZNF682 Antibody



PACO01732

Product Information

Size:

50ug

Reactivity:

Human

Source:

Rabbit

Isotype:

IgG

Applications:

ELISA, WB

Recommended dilutions:

WB:1:500-1:2000

Protein Background:

Gene ID:

ZNF682

Uniprot

O95780

Synonyms:

ZNF682; Zinc finger protein 682

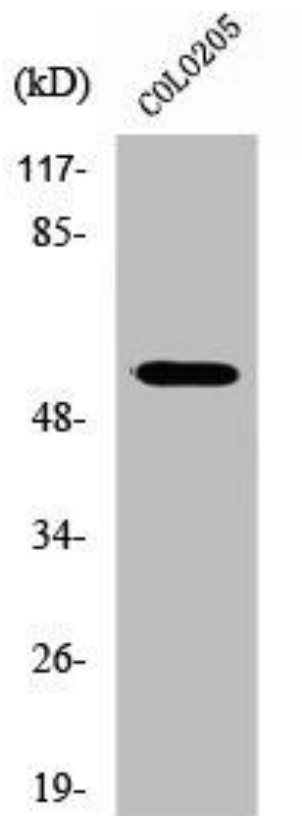
Immunogen:

Synthesized peptide derived from the N-terminal region of human ZNF682.

Storage:

Liquid in PBS containing 50% glycerol, 0.5% BSA and 0.02% sodium azide.

Product Images



Western Blot analysis of HuvEc cells using ZNF682 Polyclonal Antibody.