

# ELMO1 Antibody



PACO01749

---

## Product Information

**Size:**

50ug

**Reactivity:**

Human, Mouse

**Source:**

Rabbit

**Isotype:**

IgG

**Applications:**

ELISA, WB

**Recommended dilutions:**

WB:1:500-1:2000

**Protein Background:**

**Gene ID:**

ELMO1

**Uniprot**

Q92556

**Synonyms:**

ELMO1; KIAA0281; Engulfment and cell motility protein 1; Protein ced-12 homolog

**Immunogen:**

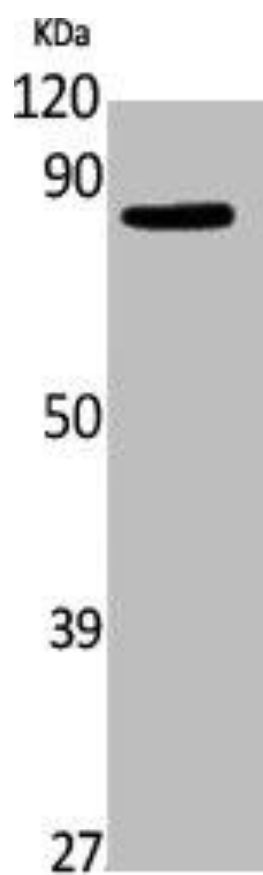
Synthesized peptide derived from the N-terminal region of human Elmo1.

**Storage:**

Liquid in PBS containing 50% glycerol, 0.5% BSA and 0.02% sodium azide.

## Product Images

---



Western Blot analysis of NIH-3T3 cells using Elmo1 Polyclonal Antibody.