

# ILF3 Antibody



PACO01755

---

## Product Information

**Size:**

50ug

**Reactivity:**

Human, Mouse, Rat

**Source:**

Rabbit

**Isotype:**

IgG

**Applications:**

ELISA, WB

**Recommended dilutions:**

WB:1:500-1:2000

**Protein Background:**

**Gene ID:**

ILF3

**Uniprot**

Q12906

**Synonyms:**

ILF3; DRBF; MPHOSPH4; NF90; Interleukin enhancer-binding factor 3; Double-stranded RNA-binding protein 76; DRBP76; M-phase phosphoprotein 4; MPP4;

**Immunogen:**

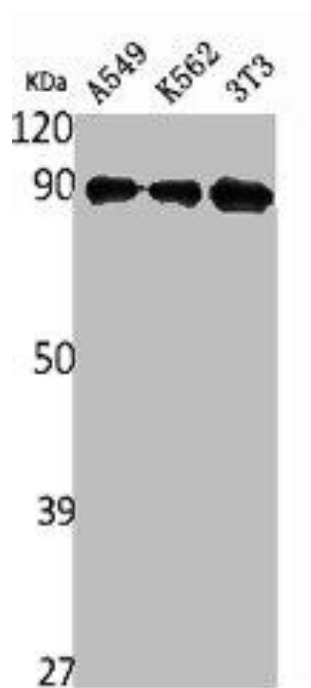
Synthesized peptide derived from the Internal region of human NF90.

**Storage:**

Liquid in PBS containing 50% glycerol, 0.5% BSA and 0.02% sodium azide.

## Product Images

---



Western Blot analysis of A549 K562 NIH-3T3 cells using NF90 Polyclonal Antibody.