

# SLC22A17 Antibody



PACO01781

---

## Product Information

**Size:**

50ug

**Reactivity:**

Human, Mouse, Rat

**Source:**

Rabbit

**Isotype:**

IgG

**Applications:**

ELISA, WB

**Recommended dilutions:**

WB:1:500-1:2000

**Protein Background:****Gene ID:**

SLC22A17

**Uniprot**

Q8WUG5

**Synonyms:**

SLC22A17; BOCT; BOIT; Solute carrier family 22 member 17; 24p3 receptor; 24p3R; Brain-type organic cation transporter; Lipocalin-2 receptor; Neutrophil gelatinase-associated lipocalin receptor; NgaiR

**Immunogen:**

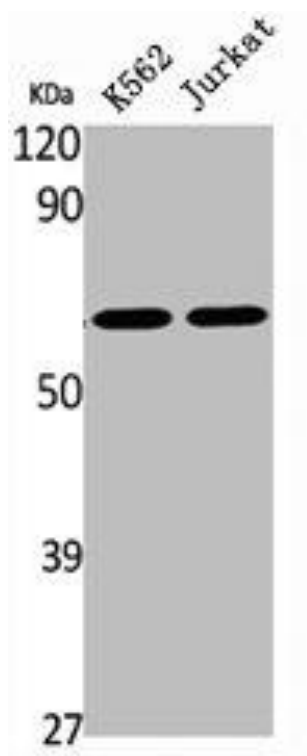
Synthesized peptide derived from the Internal region of human BOCT.

**Storage:**

Liquid in PBS containing 50% glycerol, 0.5% BSA and 0.02% sodium azide.

## Product Images

---



Western Blot analysis of K562 Jurkat cells using BOCT Polyclonal Antibody.