

PDP2 Antibody



PACO01792

Product Information

Size:

50ug

Reactivity:

Human

Source:

Rabbit

Isotype:

IgG

Applications:

ELISA, WB

Recommended dilutions:

WB:1:500-1:2000

Protein Background:

Gene ID:

PDP2

Uniprot

Q9P2J9

Synonyms:

PDP2; KIAA1348; [Pyruvate dehydrogenase [acetyl-transferring]]-phosphatase 2, mitochondrial; PDP 2; Pyruvate dehydrogenase phosphatase catalytic subunit 2; PDPC 2

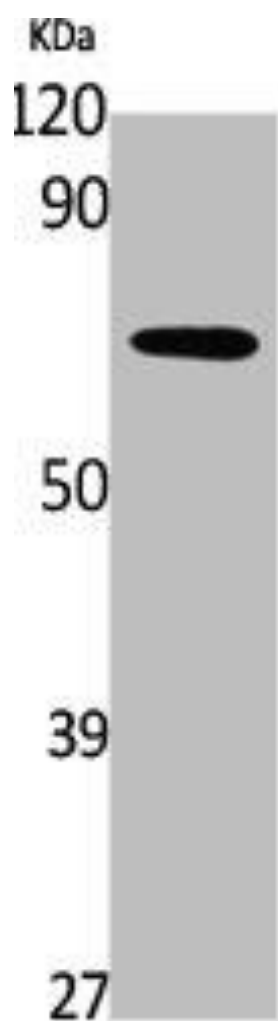
Immunogen:

Synthesized peptide derived from the Internal region of human PDP2.

Storage:

Liquid in PBS containing 50% glycerol, 0.5% BSA and 0.02% sodium azide.

Product Images



Western Blot analysis of K562 cells using PDP2 Polyclonal Antibody.