

SLC6A17 Antibody



PACO01815

Product Information

Size:

50ug

Reactivity:

Human, Mouse, Rat

Source:

Rabbit

Isotype:

IgG

Applications:

ELISA, WB

Recommended dilutions:

WB:1:500-1:2000

Protein Background:**Gene ID:**

SLC6A17

Uniprot

Q9H1V8

Synonyms:

SLC6A17; NTT4; Sodium-dependent neutral amino acid transporter SLC6A17; Sodium-dependent neurotransmitter transporter NTT4; Solute carrier family 6 member 17

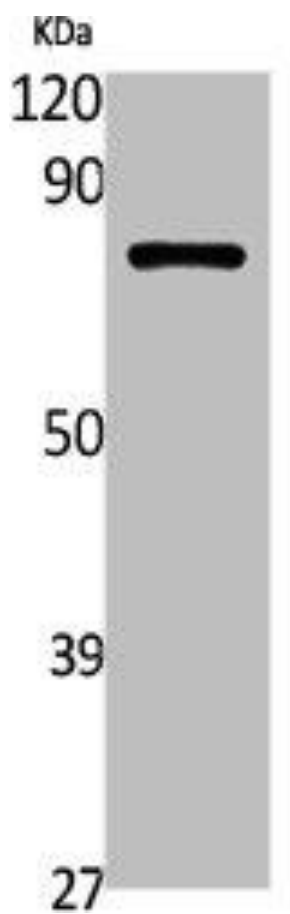
Immunogen:

Synthesized peptide derived from the Internal region of human NTT4.

Storage:

Liquid in PBS containing 50% glycerol, 0.5% BSA and 0.02% sodium azide.

Product Images



Western Blot analysis of rat stomach cells using NTT4 Polyclonal Antibody.