

# RASSF8 Antibody



PACO01818

---

## Product Information

**Size:**

50ug

**Reactivity:**

Human, Rat

**Source:**

Rabbit

**Isotype:**

IgG

**Applications:**

ELISA, WB

**Recommended dilutions:**

WB:1:500-1:2000

**Protein Background:**

**Gene ID:**

RASSF8

**Uniprot**

Q8NHQ8

**Synonyms:**

RASSF8; C12orf2; Ras association domain-containing protein 8; Carcinoma-associated protein HOJ-1

**Immunogen:**

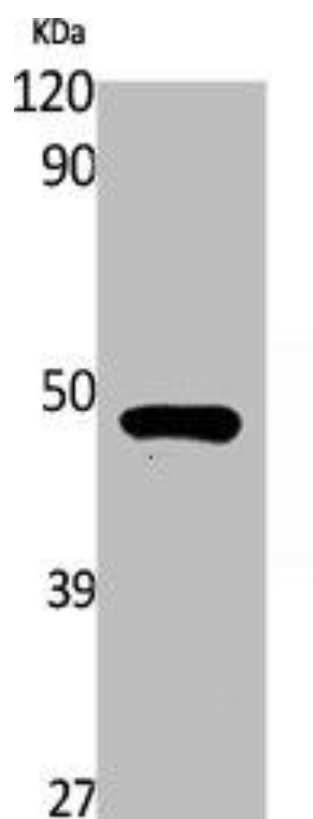
Synthesized peptide derived from the Internal region of human RASSF8.

**Storage:**

Liquid in PBS containing 50% glycerol, 0.5% BSA and 0.02% sodium azide.

## Product Images

---



Western Blot analysis of rat stomach cells using RASSF8 Polyclonal Antibody.