

# VEGFA Antibody



PACO01826

---

## Product Information

**Size:**

50ug

**Reactivity:**

Human

**Source:**

Rabbit

**Isotype:**

IgG

**Applications:**

ELISA, WB

**Recommended dilutions:**

WB:1:500-1:2000

**Protein Background:****Gene ID:**

VEGFA

**Uniprot**

P15692

**Synonyms:**

VEGFA; VEGF; Vascular endothelial growth factor A; VEGF-A; Vascular permeability factor; VPF

**Immunogen:**

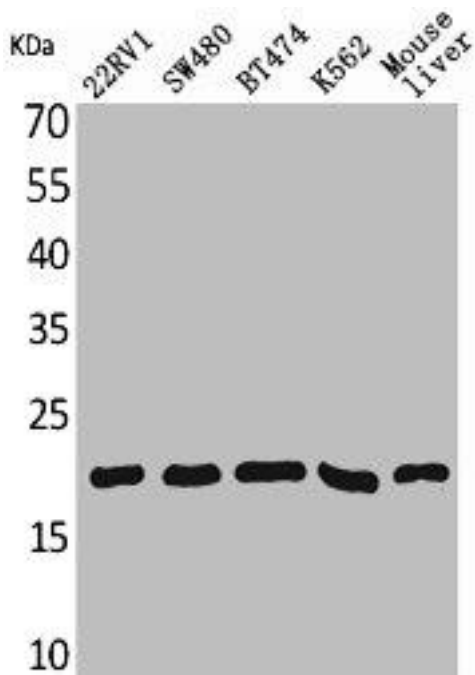
Synthesized peptide derived from the Internal region of human VEGF-A.

**Storage:**

Liquid in PBS containing 50% glycerol, 0.5% BSA and 0.02% sodium azide.

## Product Images

---



Western Blot analysis of 22RV-1 SW480 BT474 K562 mouse liver cells using VEGF-A Polyclonal Antibody.