

CX3CR1 Antibody



PACO01830

Product Information

Size:

50ug

Reactivity:

Human, Mouse, Rat

Source:

Rabbit

Isotype:

IgG

Applications:

ELISA, WB

Recommended dilutions:

WB:1:500-1:2000

Protein Background:**Gene ID:**

CX3CR1

Uniprot

P49238

Synonyms:

CX3CR1; CMKBRL1; GPR13; CX3C chemokine receptor 1; C-X3-C CKR-1; CX3CR1; Beta chemokine receptor-like 1; CMK-BRL-1; CMK-BRL1; Fractalkine receptor; G-protein coupled receptor 13; V28

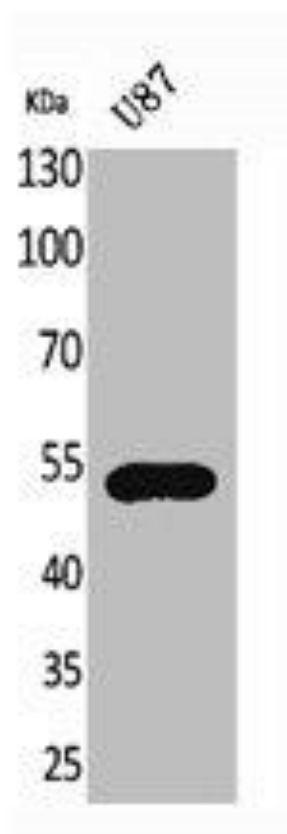
Immunogen:

Synthesized peptide derived from the Internal region of human Fractalkine Receptor.

Storage:

Liquid in PBS containing 50% glycerol, 0.5% BSA and 0.02% sodium azide.

Product Images



Western Blot analysis of U87 cells using Fractalkine Receptor Polyclonal Antibody.