

# SYCP2 Antibody



PACO01833

---

## Product Information

**Size:**

50ug

**Reactivity:**

Human

**Source:**

Rabbit

**Isotype:**

IgG

**Applications:**

ELISA, WB

**Recommended dilutions:**

WB:1:500-1:2000

**Protein Background:**

**Gene ID:**

SYCP2

**Uniprot**

Q9BX26

**Synonyms:**

SYCP2; SCP2; Synaptonemal complex protein 2; SCP-2; Synaptonemal complex lateral element protein; hsSCP2

**Immunogen:**

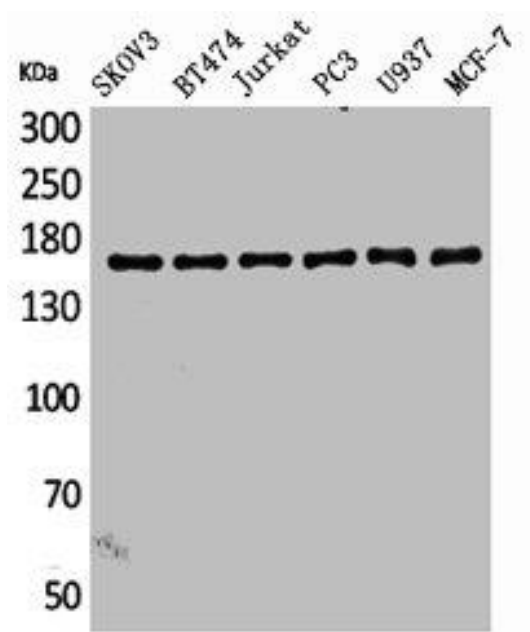
Synthesized peptide derived from the Internal region of human SCP-2.

**Storage:**

Liquid in PBS containing 50% glycerol, 0.5% BSA and 0.02% sodium azide.

## Product Images

---



Western Blot analysis of SKOV3 BT474 Jurkat PC-3 U937 MCF7 cells using SCP-2 Polyclonal Antibody.