

# PREP Antibody



PACO01846

---

## Product Information

**Size:**

50ug

**Reactivity:**

Human, Mouse, Rat

**Source:**

Rabbit

**Isotype:**

IgG

**Applications:**

ELISA, WB

**Recommended dilutions:**

WB:1:500-1:2000

**Protein Background:**

**Gene ID:**

PREP

**Uniprot**

Q8N6D4

**Synonyms:**

PREP; PEP; Prolyl endopeptidase; PE; Post-proline cleaving enzyme

**Immunogen:**

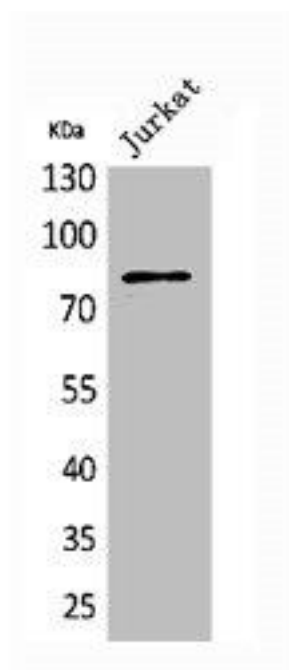
Synthesized peptide derived from the N-terminal region of human PREP.

**Storage:**

Liquid in PBS containing 50% glycerol, 0.5% BSA and 0.02% sodium azide.

## Product Images

---



Western Blot analysis of Jurkat cells using PREP Polyclonal Antibody.