

# IL10 Antibody



PACO01852

---

## Product Information

**Size:**

50ug

**Reactivity:**

Human

**Source:**

Rabbit

**Isotype:**

IgG

**Applications:**

ELISA, WB

**Recommended dilutions:**

WB:1:500-1:2000

**Protein Background:****Gene ID:**

IL10

**Uniprot**

P22301

**Synonyms:**

IL10; Interleukin-10; IL-10; Cytokine synthesis inhibitory factor; CSIF

**Immunogen:**

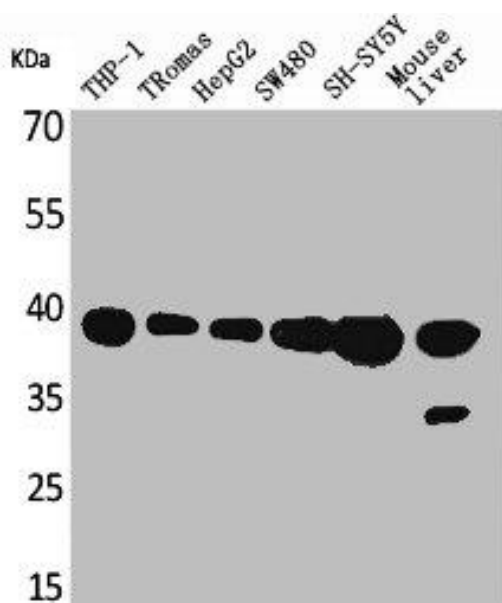
Synthesized peptide derived from the Internal region of human IL-10.

**Storage:**

Liquid in PBS containing 50% glycerol, 0.5% BSA and 0.02% sodium azide.

## Product Images

---



Western Blot analysis of THP-1 Romas HepG2 SW480 SHSY5Y Mouse liver cells using IL-10 Polyclonal Antibody.