

HSPBAP1 Antibody



PACO01853

Product Information

Size:

50ug

Reactivity:

Human

Source:

Rabbit

Isotype:

IgG

Applications:

ELISA, WB

Recommended dilutions:

WB:1:500-1:2000

Protein Background:**Gene ID:**

HSPBAP1

Uniprot

Q96EW2

Synonyms:

HSPBAP1; PASS1; HSPB1-associated protein 1; 27 kDa heat shock protein-associated protein 1; Protein associated with small stress protein 1

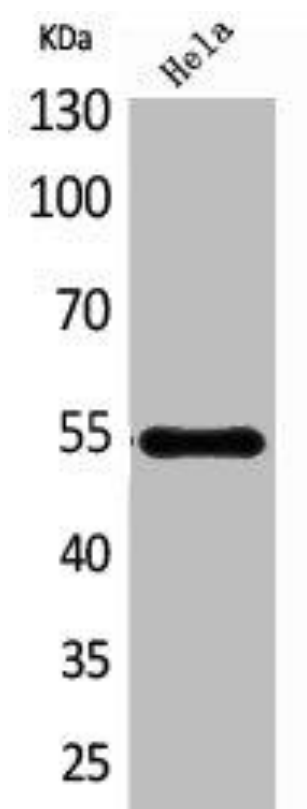
Immunogen:

Synthesized peptide derived from the Internal region of human HSPBAP1.

Storage:

Liquid in PBS containing 50% glycerol, 0.5% BSA and 0.02% sodium azide.

Product Images



Western Blot analysis of HeLa cells using HSPBAP1 Polyclonal Antibody.