

NCAM1 Antibody



PACO01860

Product Information

Size:

50ug

Reactivity:

Human

Source:

Rabbit

Isotype:

IgG

Applications:

ELISA, WB

Recommended dilutions:

WB:1:500-1:2000

Protein Background:

Gene ID:

NCAM1

Uniprot

P13591

Synonyms:

NCAM1; NCAM; Neural cell adhesion molecule 1; N-CAM-1; NCAM-1; CD56

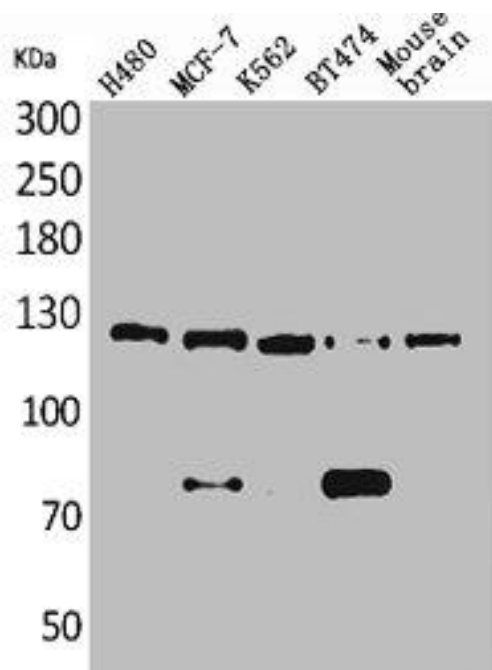
Immunogen:

Synthesized peptide derived from the Internal region of human CD56.

Storage:

Liquid in PBS containing 50% glycerol, 0.5% BSA and 0.02% sodium azide.

Product Images



Western Blot analysis of H460 MCF7 K562 BT474 mouse brain cells using CD56 Polyclonal Antibody.