

KRT14 Antibody



PACO01887

Product Information

Size:

50ug

Reactivity:

Human, Mouse, Rat

Source:

Rabbit

Isotype:

IgG

Applications:

ELISA, WB

Recommended dilutions:

WB:1:500-1:2000

Protein Background:**Gene ID:**

KRT14

Uniprot

P02533

Synonyms:

KRT14; Keratin, type I cytoskeletal 14; Cytokeratin-14; CK-14; Keratin-14; K14

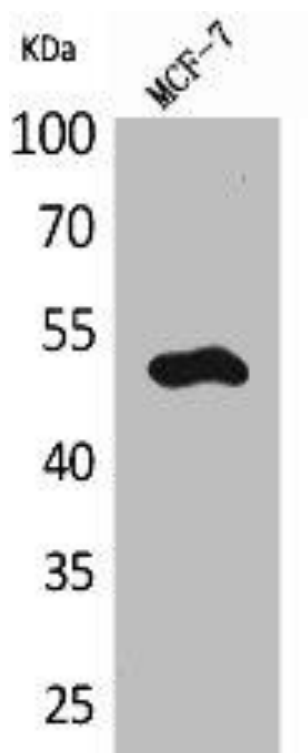
Immunogen:

Synthesized peptide derived from the C-terminal region of human Cytokeratin 14.

Storage:

Liquid in PBS containing 50% glycerol, 0.5% BSA and 0.02% sodium azide.

Product Images



Western Blot analysis of MCF7 cells using Cytokeratin 14 Polyclonal Antibody.