

PLA2G4A Antibody



PACO01890

Product Information

Size:

50ug

Reactivity:

Human, Mouse, Rat

Source:

Rabbit

Isotype:

IgG

Applications:

ELISA, WB

Recommended dilutions:

WB:1:500-1:2000

Protein Background:

Gene ID:

PLA2G4A

Uniprot

P47712

Synonyms:

PLA2G4A; CPLA2; PLA2G4; Cytosolic phospholipase A2; cPLA2; Phospholipase A2 group IVA

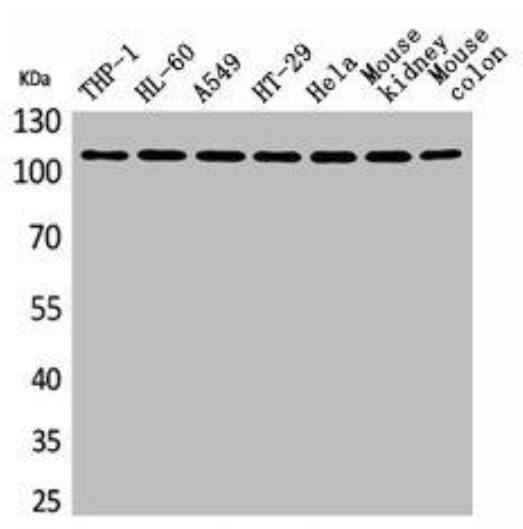
Immunogen:

Synthesized peptide derived from the N-terminal region of human cPLA2.

Storage:

Liquid in PBS containing 50% glycerol, 0.5% BSA and 0.02% sodium azide.

Product Images



Western Blot analysis of THP-1 H460 A549 HT29 HeLa mouse kidney mouse colon cells using cPLA2 Polyclonal Antibody.