

FGF20 Antibody



PACO01892

Product Information

Size:

50ug

Reactivity:

Human, Mouse, Rat

Source:

Rabbit

Isotype:

IgG

Applications:

ELISA, WB

Recommended dilutions:

WB:1:500-1:2000

Protein Background:

Gene ID:

FGF20

Uniprot

Q9NP95

Synonyms:

FGF20; Fibroblast growth factor 20; FGF-20

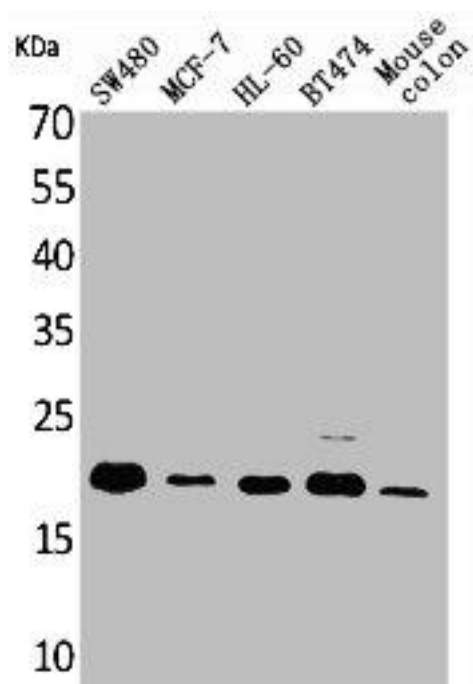
Immunogen:

Synthesized peptide derived from the Internal region of human FGF-20.

Storage:

Liquid in PBS containing 50% glycerol, 0.5% BSA and 0.02% sodium azide.

Product Images



Western Blot analysis of SW480 MCF-7 HL-60 BT474 mouse colon cells using FGF-20 Polyclonal Antibody.