

CUL4B Antibody



PACO01901

Product Information

Size:

50ug

Reactivity:

Human, Mouse, Rat

Source:

Rabbit

Isotype:

IgG

Applications:

ELISA, WB

Recommended dilutions:

WB:1:500-1:2000

Protein Background:

Gene ID:

CUL4B

Uniprot

Q13620

Synonyms:

CUL4B; KIAA0695; Cullin-4B; CUL-4B

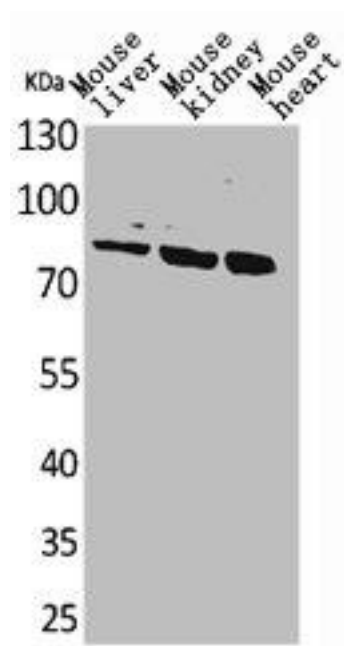
Immunogen:

Synthesized peptide derived from the Internal region of human CUL-4B.

Storage:

Liquid in PBS containing 50% glycerol, 0.5% BSA and 0.02% sodium azide.

Product Images



Western Blot analysis of mouse liver mouse kidney mouse heart cells using CUL-4B Polyclonal Antibody.