

ROCK2 Antibody



PACO01906

Product Information

Size:

50ug

Reactivity:

Human, Mouse, Rat

Source:

Rabbit

Isotype:

IgG

Applications:

ELISA, WB

Recommended dilutions:

WB:1:500-1:2000

Protein Background:

Gene ID:

ROCK2

Uniprot

O75116

Synonyms:

ROCK2; KIAA0619; Rho-associated protein kinase 2; Rho kinase 2; Rho-associated, coiled-coil-containing protein kinase 2; Rho-associated, coiled-coil-containing protein kinase II; ROCK-II; p164 ROCK-2

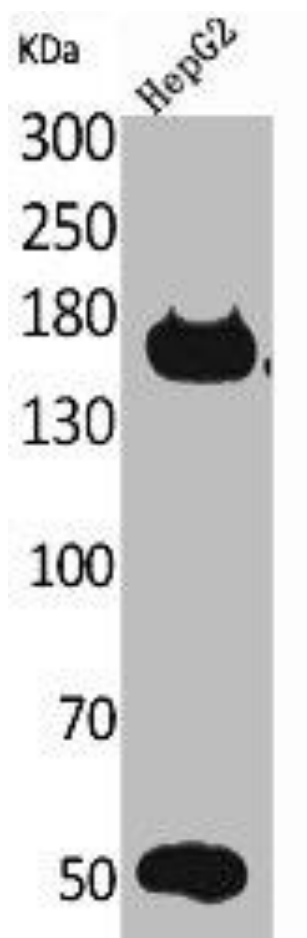
Immunogen:

Synthesized peptide derived from the Internal region of human Rock-2.

Storage:

Liquid in PBS containing 50% glycerol, 0.5% BSA and 0.02% sodium azide.

Product Images



Western Blot analysis of HepG2 cells using Rock-2 Polyclonal Antibody.