

PPIA Antibody



PACO01910

Product Information

Size:

50ug

Reactivity:

Human, Mouse, Rat

Source:

Rabbit

Isotype:

IgG

Applications:

ELISA, WB

Recommended dilutions:

WB:1:500-1:2000

Protein Background:

Gene ID:

PPIA

Uniprot

P62937

Synonyms:

PPIA; CYPA; Peptidyl-prolyl cis-trans isomerase A; PPlase A; Cyclophilin A; Cyclosporin A-binding protein; Rotamase A

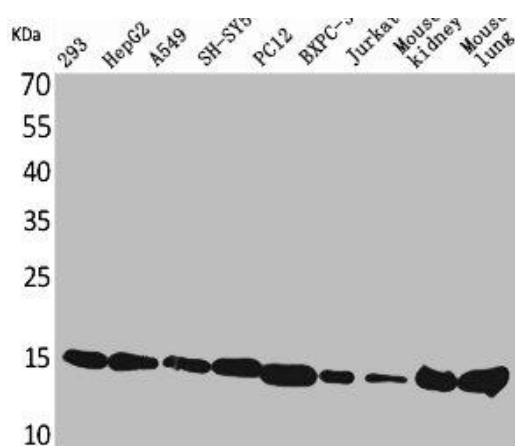
Immunogen:

Synthesized peptide derived from the Internal region of human CyPA.

Storage:

Liquid in PBS containing 50% glycerol, 0.5% BSA and 0.02% sodium azide.

Product Images



Western Blot analysis of 293 HepG2 A549 SHSY5Y PC-12 BXPC-3 Jurkat mouse kidney mouse lung cells using CyPA Polyclonal Antibody.