

P2RX3 Antibody



PACO01924

Product Information

Size:

50ug

Reactivity:

Human, Mouse, Rat

Source:

Rabbit

Isotype:

IgG

Applications:

ELISA, WB

Recommended dilutions:

WB:1:500-1:2000

Protein Background:

Gene ID:

P2RX3

Uniprot

P56373

Synonyms:

P2RX3; P2X purinoceptor 3; P2X3; ATP receptor; Purinergic receptor

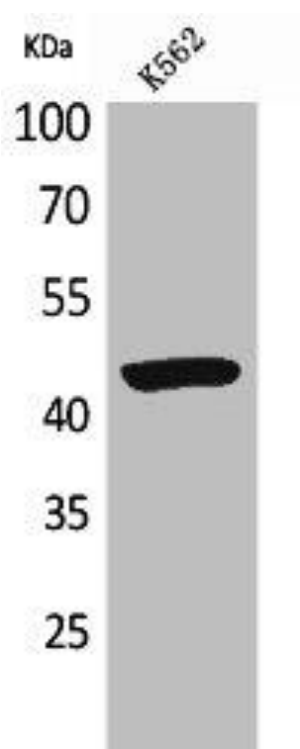
Immunogen:

Synthesized peptide derived from the Internal region of human P2X3.

Storage:

Liquid in PBS containing 50% glycerol, 0.5% BSA and 0.02% sodium azide.

Product Images



Western Blot analysis of K562 cells using P2X3 Polyclonal Antibody.