

CYP11B1 Antibody



PACO01936

Product Information

Size:

50ug

Reactivity:

Human

Source:

Rabbit

Isotype:

IgG

Applications:

ELISA, WB

Recommended dilutions:

WB:1:500-1:2000

Protein Background:**Gene ID:**

CYP11B1

Uniprot

P15538

Synonyms:

CYP11B1; S11BH; Cytochrome P450 11B1, mitochondrial; CYPXIB1; Cytochrome P-450c11; Cytochrome P450C11; Steroid 11-beta-hydroxylase; CYP11B2;

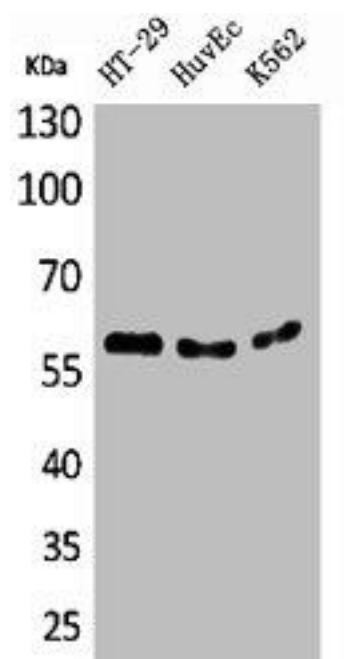
Immunogen:

Synthesized peptide derived from the N-terminal region of human CYP11B1/2.

Storage:

Liquid in PBS containing 50% glycerol, 0.5% BSA and 0.02% sodium azide.

Product Images



Western Blot analysis of HT29 HuvEc K562 cells using CYP11B1/2 Polyclonal Antibody.