

# CD28 Antibody



PACO01952

---

## Product Information

**Size:**

50ug

**Reactivity:**

Human

**Source:**

Rabbit

**Isotype:**

IgG

**Applications:**

ELISA, WB

**Recommended dilutions:**

WB:1:500-1:2000

**Protein Background:**

**Gene ID:**

CD28

**Uniprot**

P10747

**Synonyms:**

CD28; T-cell-specific surface glycoprotein CD28; TP44; CD28

**Immunogen:**

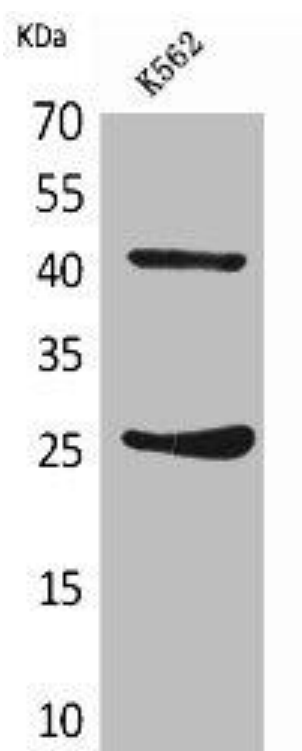
Synthesized peptide derived from the Internal region of human CD28.

**Storage:**

Liquid in PBS containing 50% glycerol, 0.5% BSA and 0.02% sodium azide.

## Product Images

---



Western Blot analysis of K562 cells using CD28 Polyclonal Antibody.