

# LILRA2 Antibody



PACO01962

---

## Product Information

**Size:**

50ug

**Reactivity:**

Human

**Source:**

Rabbit

**Isotype:**

IgG

**Applications:**

ELISA, WB

**Recommended dilutions:**

WB:1:500-1:2000

**Protein Background:****Gene ID:**

LILRA2

**Uniprot**

Q8N149

**Synonyms:**

LILRA2; ILT1; LIR7; Leukocyte immunoglobulin-like receptor subfamily A member 2; CD85 antigen-like family member H; Immunoglobulin-like transcript 1; ILT-1; Leukocyte immunoglobulin-like receptor 7; LIR-7; CD85h; LILRA3; ILT6; LIR4;

**Immunogen:**

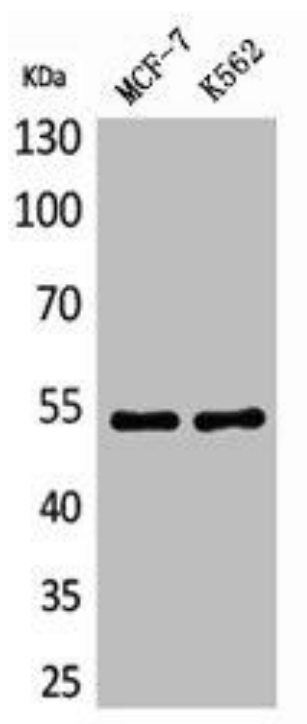
Synthesized peptide derived from the Internal region of human CD85e/h.

**Storage:**

Liquid in PBS containing 50% glycerol, 0.5% BSA and 0.02% sodium azide.

## Product Images

---



Western Blot analysis of MCF7 K562 cells using CD85e/h Polyclonal Antibody.