

SEMA4D Antibody



PACO01964

Product Information

Size:

50ug

Reactivity:

Human, Mouse, Rat

Source:

Rabbit

Isotype:

IgG

Applications:

ELISA, WB

Recommended dilutions:

WB:1:500-1:2000

Protein Background:

Gene ID:

SEMA4D

Uniprot

Q92854

Synonyms:

SEMA4D; C9orf164; CD100; SEMAJ; Semaphorin-4D; A8; BB18; GR3; CD100

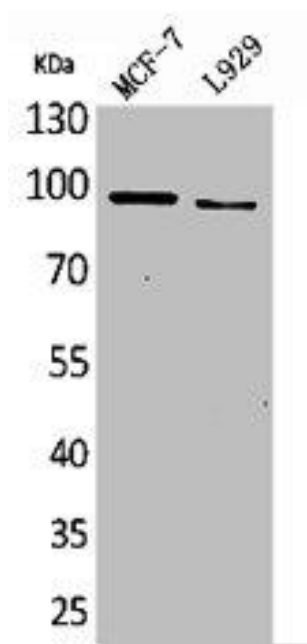
Immunogen:

Synthesized peptide derived from the N-terminal region of human CD100.

Storage:

Liquid in PBS containing 50% glycerol, 0.5% BSA and 0.02% sodium azide.

Product Images



Western Blot analysis of MCF7 L929 cells using CD100 Polyclonal Antibody.