

CD207 Antibody



PACO01976

Product Information

Size:

50ug

Reactivity:

Human

Source:

Rabbit

Isotype:

IgG

Applications:

ELISA, WB

Recommended dilutions:

WB:1:500-1:2000

Protein Background:

Gene ID:

CD207

Uniprot

Q9UJ71

Synonyms:

CD207; CLEC4K; C-type lectin domain family 4 member K; Langerin; CD207

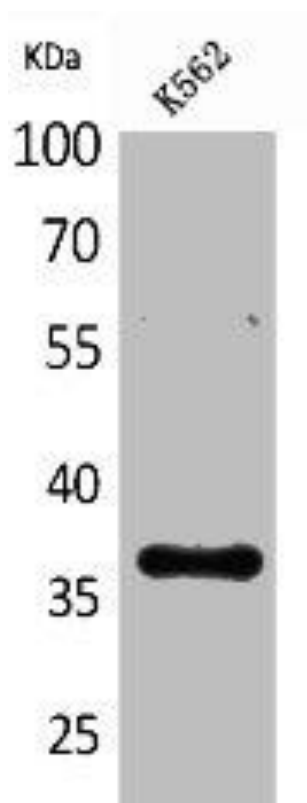
Immunogen:

Synthesized peptide derived from the Internal region of human CD207.

Storage:

Liquid in PBS containing 50% glycerol, 0.5% BSA and 0.02% sodium azide.

Product Images



Western Blot analysis of K562 cells using CD207 Polyclonal Antibody.