

KLRB1 Antibody



PACO01977

Product Information

Size:

50ug

Reactivity:

Human

Source:

Rabbit

Isotype:

IgG

Applications:

ELISA, WB

Recommended dilutions:

WB:1:500-1:2000

Protein Background:

Gene ID:

KLRB1

Uniprot

Q12918

Synonyms:

KLRB1; CLEC5B; NKRP1A; Killer cell lectin-like receptor subfamily B member 1; C-type lectin domain family 5 member B; HNKRP-1A; NKRP-1A; Natural killer cell surface protein P1A; CD161

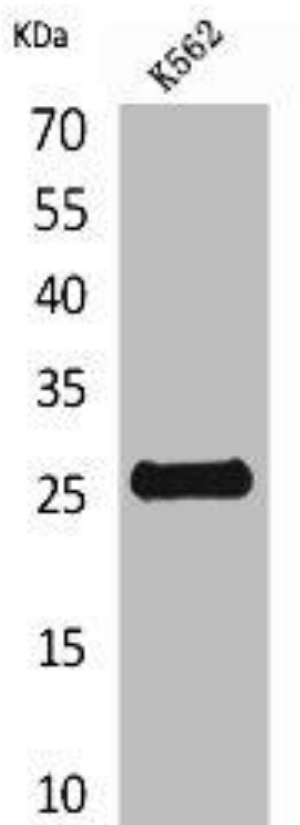
Immunogen:

Synthesized peptide derived from the Internal region of human CD161.

Storage:

Liquid in PBS containing 50% glycerol, 0.5% BSA and 0.02% sodium azide.

Product Images



Western Blot analysis of K562 cells using CD161 Polyclonal Antibody.